



## **Automate JDE EnterpriseOne**

Reduce your TCO and improve your ROI

**Introduction**

JD Edwards EnterpriseOne is a powerful suite of products designed to meet the full spectrum of enterprise software needs. However, you can significantly improve your return on investment (ROI) and reduce your total cost of ownership (TCO) for JD Edwards EnterpriseOne by reducing your batch window time, controlling end-to-end business processes, and distributing output more efficiently.

UC4 Software is a leading provider of innovative enterprise automation solutions that have automated application business processes, improved processing efficiency, and significantly reduced IT operating expenses for over 1,700 companies worldwide. When applied to JD Edwards EnterpriseOne, the UC4 platform significantly reduces the JD Edwards EnterpriseOne batch window, creates end-to-end processing, and automates output distribution.

This white paper details the support that the UC4 platform provides for JD Edwards EnterpriseOne and shows why UC4 is the best solution for enhancing your ROI and reducing your TCO.

JD Edwards EnterpriseOne: Opportunities for Enhancement..... 3

Nightly Report Processing ..... 3

Version Parameter Changes ..... 4

Tracking Child Jobs ..... 4

Report Distribution ..... 5

Coordinating Processing Between Applications ..... 5

Monitoring and Auditing ..... 6

Increasing the Return on Your Investment in EnterpriseOne..... 6

## JD Edwards EnterpriseOne: Opportunities for Enhancement

When you implemented JD Edwards EnterpriseOne, most likely your goal was to automate recurring business processes. You probably purchased one or more of the following JD Edwards EnterpriseOne solutions:

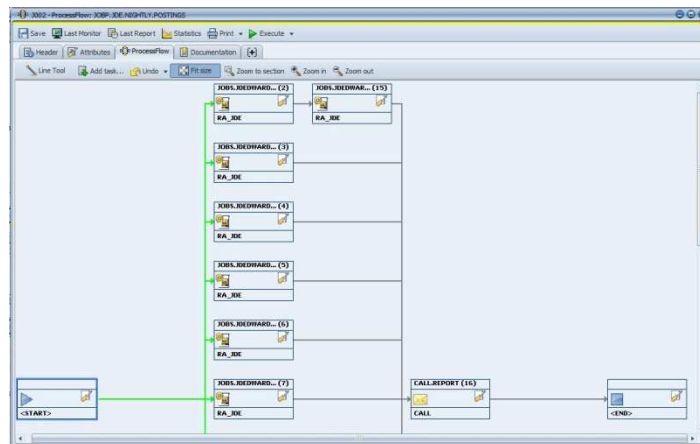
- Asset Lifecycle Management
- Business Intelligence and Performance Management
- Collaboration and Integration
- Customer Relationship Management
- Financial Management
- Homebuilder Management
- Human Capital Management
- Project Management
- Real Estate Management
- Supplier Relationship Management
- Supply Chain Management

The level of automation provided by these solutions justified the investment, and was a great improvement over the manual procedures they replaced. However, if you are like many other organizations that implemented JD Edwards EnterpriseOne, you soon became aware of six areas that could be improved:

- Length of batch window
- Labor-intensive parameter changes to report versions
- Tracking child jobs
- Report distribution
- Coordinating processing between JD Edwards EnterpriseOne and other applications
- Monitoring and auditing

### Nightly Report Processing

JD Edwards EnterpriseOne comes with a scheduler with very limited functionality. Reports are run in the order they are submitted to a queue, but there can be no direct dependencies between reports in the queue. Each queue can be set to allow a certain number of reports to be processed at the same time. If the queue capacity is set to three, then three reports will run at the same time, even if one of the reports should complete before the next report is run. You can run jobs through several queues, but there is no way to coordinate jobs



4 Process Flows Allow JDE Dependencies

across queues. Often times, you rely on a timing dependency where you hope a report completes before a dependant report is initiated. When you encounter the situation of a report being started before a dependent report is completed, inconsistent results are achieved and report reruns are required.

If you are running simple job streams with limited numbers of reports and data, the JD Edwards EnterpriseOne scheduler is generally satisfactory. However, if you are running complex, lengthy job streams with large or variable amounts of data, your processing time can stretch out over many hours and exceed the available nightly batch window. The lack of provided automation functionality can lead to complex scripted workarounds.

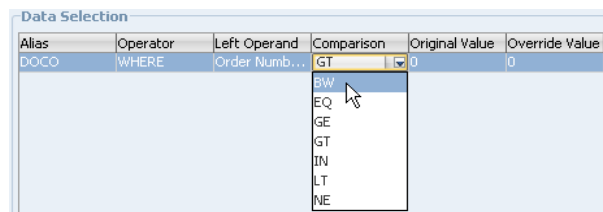
You can boost your JD Edwards EnterpriseOne ROI by shortening the nightly batch window with the advanced automation features in UC4. In JD Edwards EnterpriseOne, batch processing can be stretched out unnecessarily if you have a job stream where some reports must run sequentially, but other jobs can run in parallel.

In the UC4 platform, you can precisely model the process flow with strict dependencies between reports running sequentially or in parallel. UC4 process flows support sequential and parallel processing in any combination, and support report failure blocking. If a report ends in error, the UC4 job can block all following jobs in the process flow from executing and alert an operator. After correcting the problem, you can begin processing the flow from the point of failure, rather than rerunning the entire job stream. This can save a considerable amount of time and be the difference between completing processing within the batch processing window or running over your schedule.

After implementing UC4, an analyst working for a major corporation had the following to say about the impact on their batch processing window: "Just by installing UC4 and converting our current JDE schedule, we shaved 2.5 hours off of our nightly batch window (of 10 hours). That's before we even implemented any event-based processing – which we figure will shave another two hours off."

### Version Parameter Changes

In JD Edwards EnterpriseOne, changing parameter values is a complex process. Parameters are stored in a parameter set (version) and given a version number. To change a parameter at report execution time or dynamically generate it while running through a schedule, the version needs to be modified constantly or a new version needs to be created. This limits the extent to which you can automate JD Edwards EnterpriseOne processes.



UC4 supports JDE version changes.

UC4 provides a unique feature that allows the alteration of JD Edwards versions at run time. Dates and other types of parameters can be changed dynamically, reducing version maintenance. With UC4, it is now possible to retrieve values from a corporate database at the time a job is executed. This enables a level of automation unattainable with the JD Edwards EnterpriseOne scheduler.

### Tracking Child Jobs

When you run a JD Edwards EnterpriseOne report from UC4 either manually, timer initiated, or event initiated, UC4 can track any child jobs kicked off by the parent job. UC4 tracks the parent job in the operations console. The parent job reflects the status of itself and all its children. The parent job shows a running status until all of its children have completed. If a child job fails, the parent job shows a failed status. This makes the operator's job much easier, enabling them to spot problems and correct them in a timely fashion.

## Report Distribution

The information contained in JD Edwards EnterpriseOne reports is useful only when it gets into the hands of your employees and customers. Speed up the distribution of information, and your whole operation becomes more efficient.

JD Edwards EnterpriseOne produces reports as PDF files. However, it does not have a mechanism for viewing or distributing the PDFs. Distribution must be done manually or by writing scripts. Often, corporations will place the files in a directory structure, and the users manually retrieve the files from the appropriate directory.

The UC4 platform provides several output distribution functions that give users fast access to reports:

- Immediately after reports are generated, users can view the PDF files online from UC4. This is the quickest way to view output, and works particularly well for users that submit ad hoc jobs from UC4. UC4 also provides a high level of security for the reports. Users can be restricted to viewing only reports that they run, or they can be given broader access.
- For users that do not have access to UC4, UC4 can send the PDF files as an email attachment, automatically. The files can be sent to any number of users or email groups.
- Reports can be sent to any number of print devices anywhere in your network, including printers and fax machines. Report distribution is often an afterthought. With UC4, it becomes an integral part of your JD Edwards EnterpriseOne solution.

## Coordinating Processing Between Applications

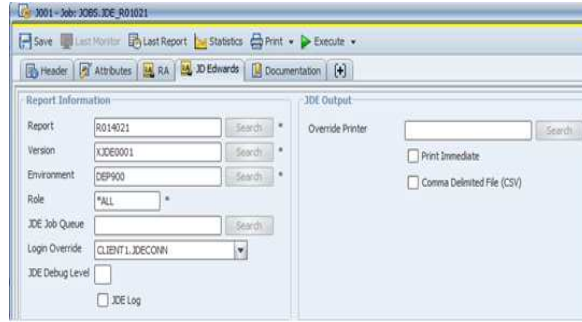
Most applications, including JD Edwards EnterpriseOne, come with at least basic scheduling capabilities. Some come with a slightly more sophisticated tool. However, none of these applications have the ability to schedule jobs in other applications, making it difficult – if not impossible – to automate processing across applications or the enterprise.

UC4 can schedule processes across all major applications in your enterprise, which means you can model a process that manages data and the process flow across multiple applications. For example, a job finishing in one application can be set up as a prerequisite for a job starting in another application.

UC4 also provides a single point for monitoring and controlling your IT environment. All jobs processing in all applications are displayed in the UC4 Activities window. Using UC4, you can put jobs on hold, delete jobs, change parameters, and cancel running jobs with a mouse click. The single point of control is the most efficient way to monitor your enterprise applications.

## Monitoring and Auditing

As business systems grow, central monitoring becomes critical. The root problem holding up a process needs to be identified immediately when it happens. JD Edwards EnterpriseOne may have a series of complicated logical paths that need to be executed in a time-sensitive environment and therefore each step needs to be tracked to make sure it executed successfully and your service level agreements are met.



**Build JDE jobs easily with UC4.**

UC4 can provide monitoring of your entire business and IT automations. Integrating JD Edwards EnterpriseOne monitoring into a central console with the rest of your enterprise automations provides a complete view of your operational processing. When steps complete in error, or you are in danger of missing your service level goals, UC4 can notify the appropriate staff to take

corrective actions immediately. Platform, database, application, and service automations are made visible to an operator. Unplanned outages can be responded to in a timely manner, ensuring that SLAs are met.

In addition, UC4 has full audit capabilities that record all user and system actions. Full auditing capabilities and reporting, coupled with user rights management across multiple and potentially confidential objects, is required as well. UC4 auditing can be used to monitor your SLA, provide trending capabilities for capacity planning, and help you meet your internal and external auditing requirements.

## Increasing the Return on Your Investment in EnterpriseOne

You purchased JD Edwards EnterpriseOne to streamline your administrative functions and make them more efficient. This was critical if your corporation was going to remain competitive in these challenging times.

Now it's time to take the next step and further improve your ROI and reduce your TCO by optimizing JD Edwards EnterpriseOne batch processing, creating end-to-end automations, and automating report distribution. If you are just beginning an EnterpriseOne implementation, you'll want to streamline the implementation process.

The UC4 platform is the clear choice. It is a true enterprise automation platform that is fully integrated with JD Edwards EnterpriseOne, enhancing EnterpriseOne in all the critical areas. It also provides a development environment that can significantly shorten implementation and upgrade time.